

An aerial photograph of a coastal town situated on a narrow peninsula. The town is densely packed with buildings and is bordered by a long, straight sandy beach. The water surrounding the peninsula is a vibrant turquoise color, transitioning to a deeper blue further out. The sky is a clear, pale blue with a few wispy clouds. The overall scene is serene and picturesque.

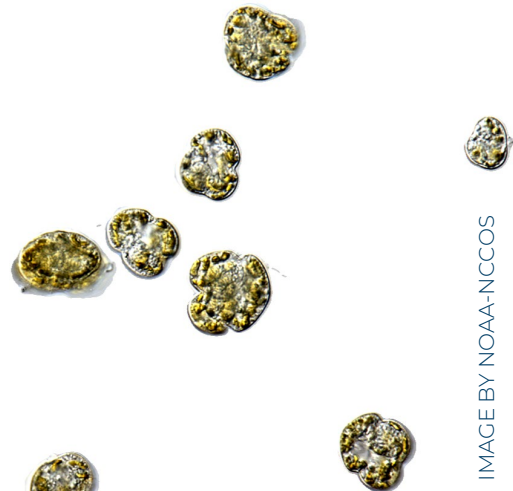
MANAGEMENT & RESPONSE

Healing The Harbor: Nutrient Mitigation Strategies for an Impaired Estuary

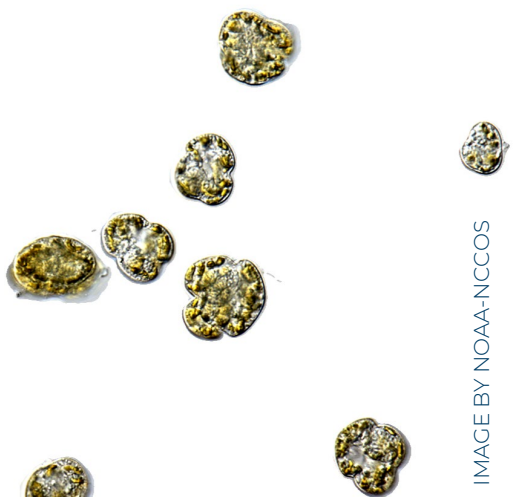
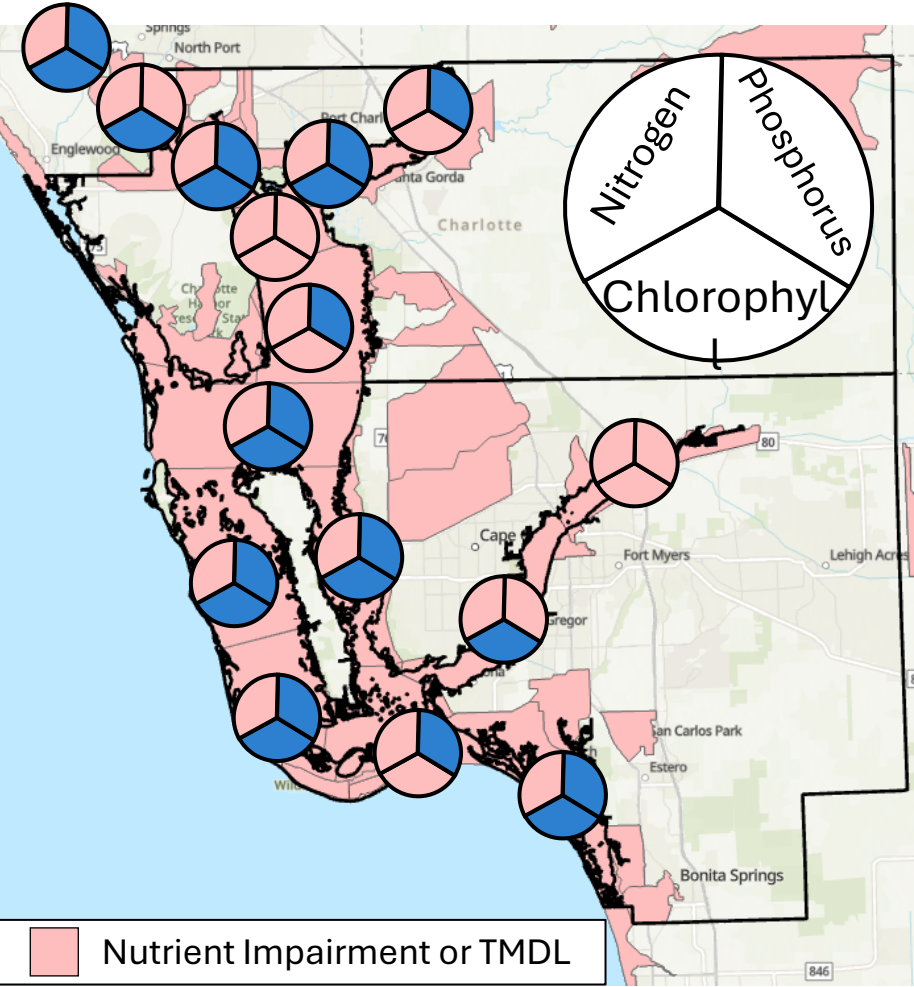
Brandon Moody

Water Quality and Resiliency Manager

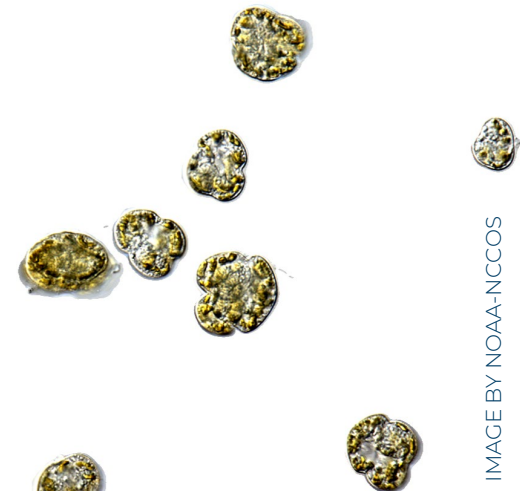
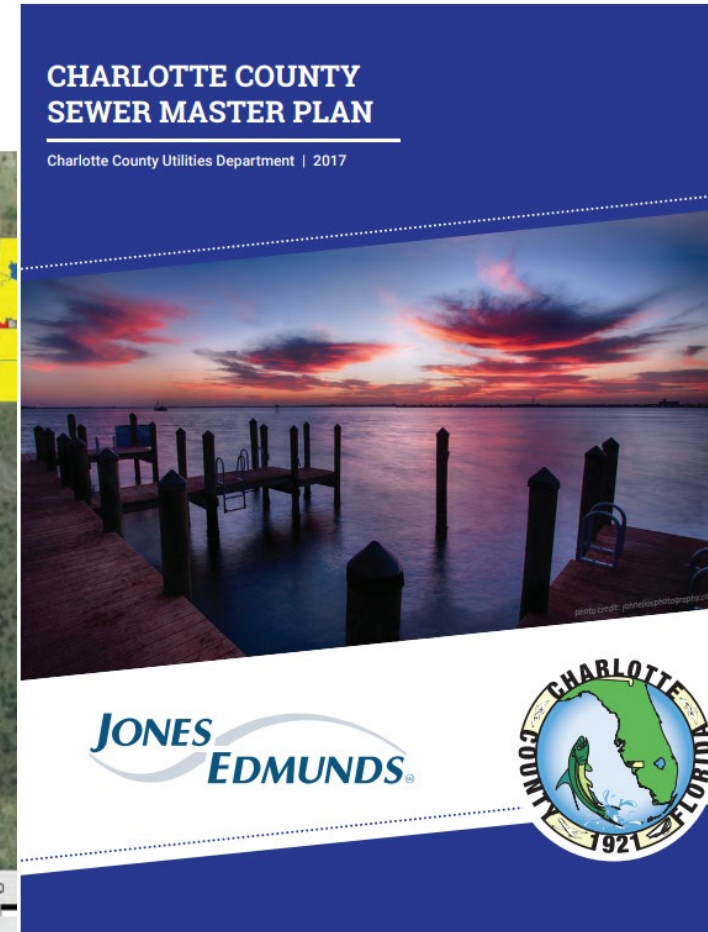
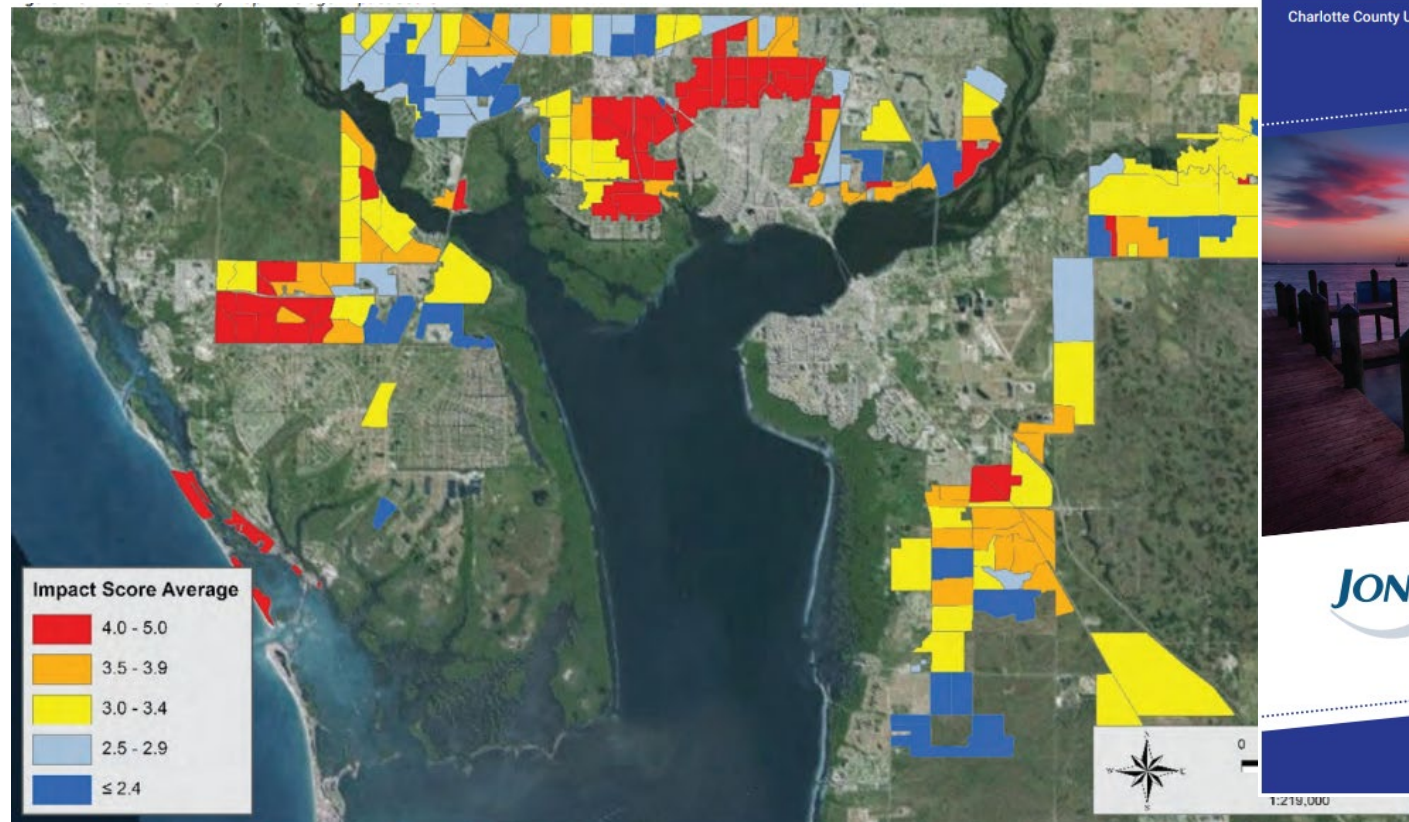
Charlotte County Administration



BACKGROUND

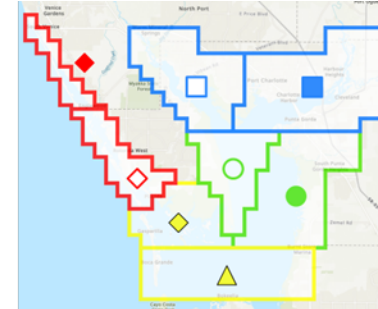


IMPLEMENTATION

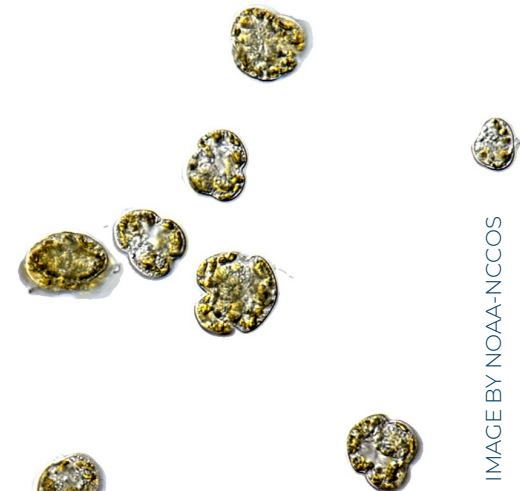
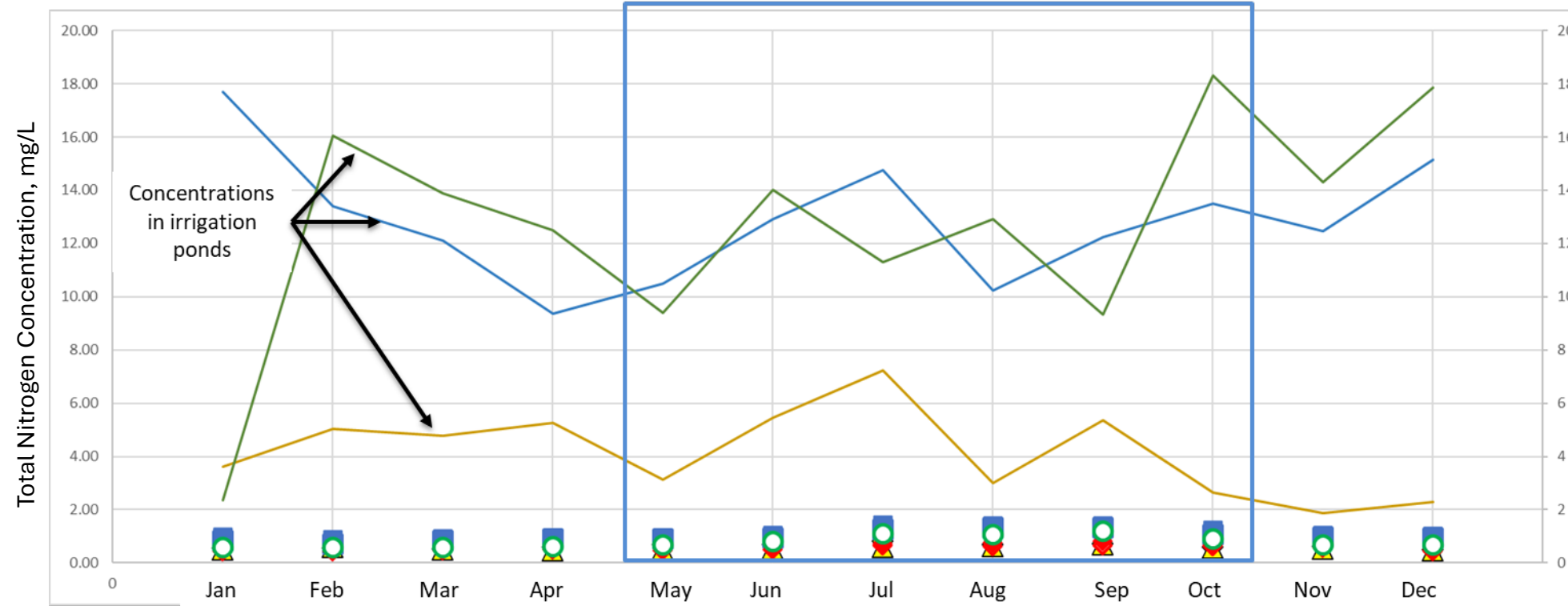


IMPLEMENTATION

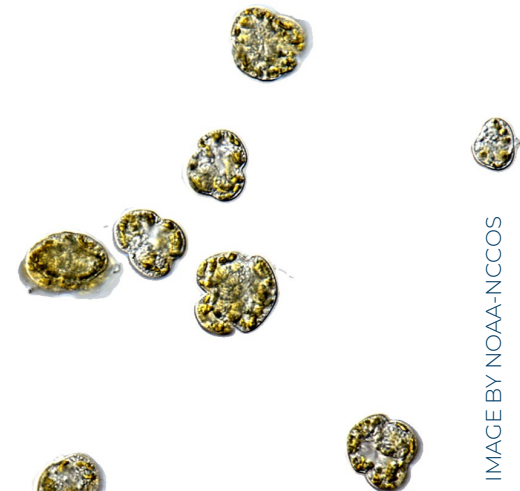
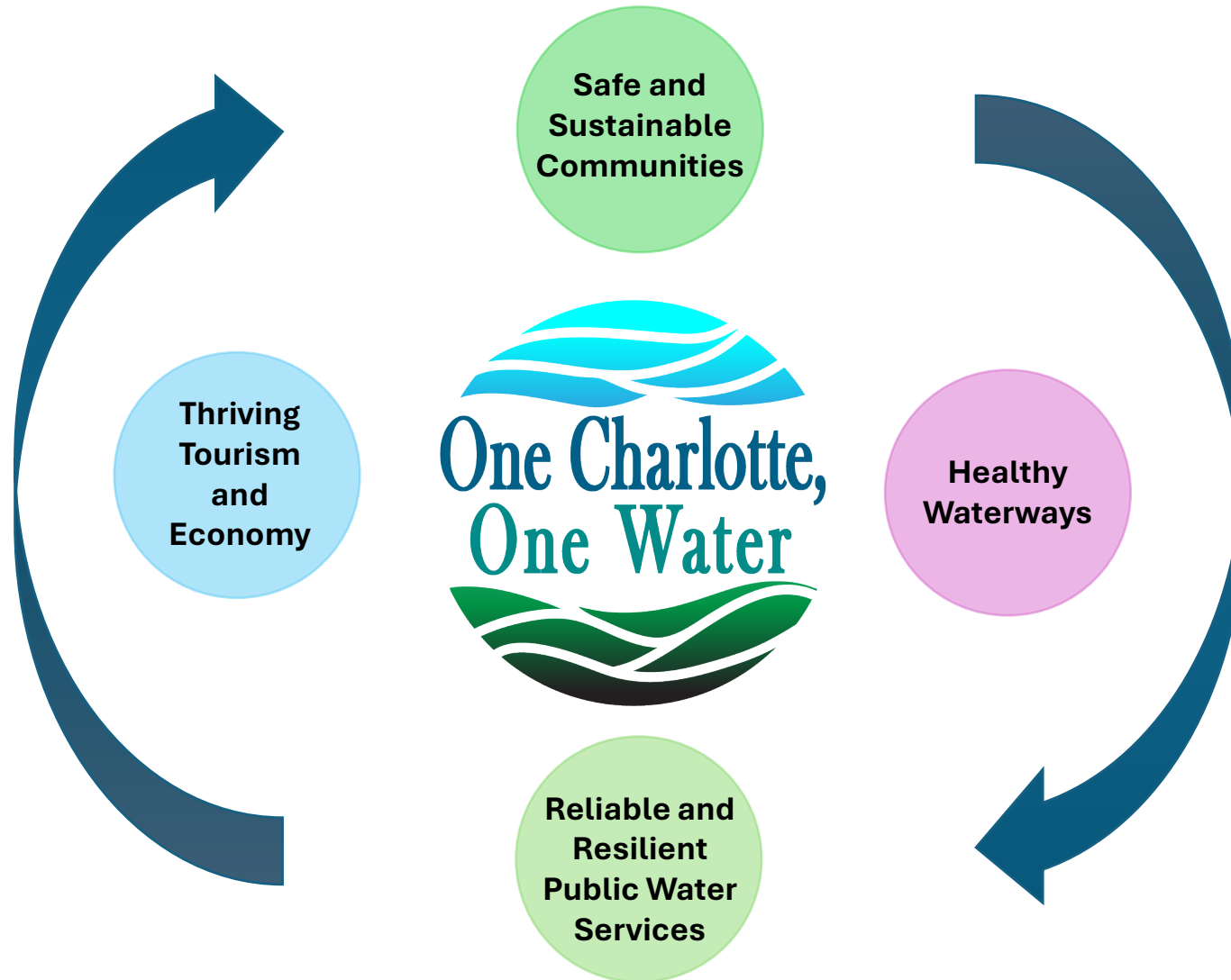
AWT Upgrades at all WRFs



Wet Season (May-October)

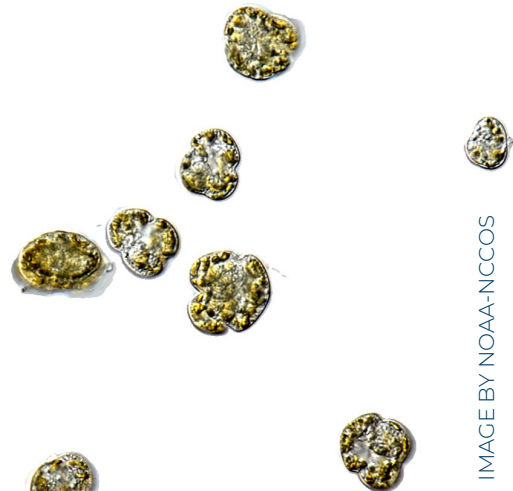


IMPLEMENTATION



SUCCESSSES

- 1. Acceptance and support from BOCC**
- 2. Increased public awareness and feedback**
- 3. Increased interagency coordination**



CHALLENGES

Our Big Three: Money, Modeling, and “Meh”



1 (Banks are in serious need of revegetation)

28%

2

4%

3 (I would live on this canal, but I would probably plant more vegetation in my yard)

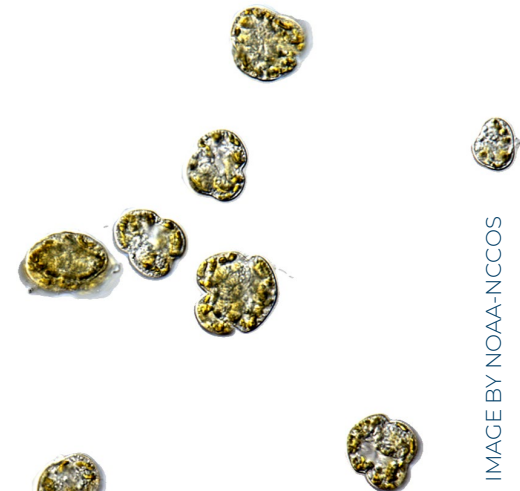
27%

4

3%

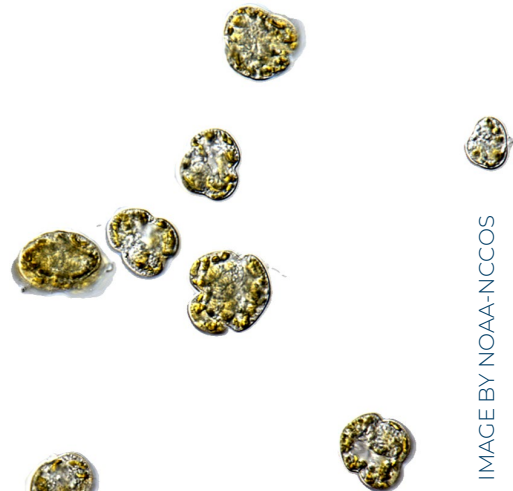
5 (This is what a waterway and canal banks/yard should look like)

38%



REFLECTION

- **Bonus challenge: FDEP and restoration planning**
- **Bonus challenge #2: the fine art of finger-pointing**
- **Time to talk more regionalization**
- **Merging water quality and resiliency**
- **Some topics need more spaghetti thrown at their walls**



ACKNOWLEDGEMENTS

Our efforts would be next to impossible without:

- **FWC**
- **FDEP-Aquatic Preserves**
- **Sea Grant**
- **Coastal and Heartland National Estuary Program**
- **SWFWMD**
- **Local citizen groups**

